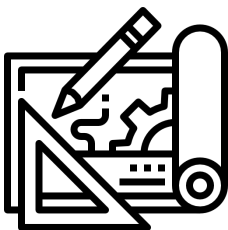
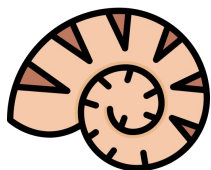


Year 6 Curriculum leaflet Spring 2



Evolution and Inheritance

Building the Past



Reading & Writing

In English we will be:

- Reading and exploring **Skellig** by David Almond.
- Writing a first person monologue.
- Writing a narrative in the first person.
- Making and justifying inferences about a text.



Maths

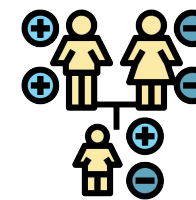
We will be learning how to:

- Draw a range of geometric shapes using given dimensions and angles.
- Recognise and construct 3D shapes.
- Name and illustrate parts of a circle.
- Represent multiplication facts involving fractions.
- Multiply two proper fractions.
- Divide a fraction by an integer.

Science

We will be learning how:

- Variation can lead to adaptation.
- Living things are adapted to suit their environment.
- Local animals have adapted to their habitat.
- An animal or plant has evolved over time.



History

We will be learning about:

- The impact the Great Fire of London had on the city's architecture.
- Christopher Wren and his redesign of St. Paul's Cathedral.
- Why Rafael Viñoly is a significant architect.

Children will also visit the St. Paul's Cathedral in Central London.

PE

PE lessons will be on a:
Wednesday (6W & 6D)
Thursday (6B)
Friday (ALL)

Please wear a PE kit on those days.

The focus of the sessions will be tag rugby and fitness.



RE

This term our focus will be on **Commitment in Religious Beliefs.**

We will be learning to:

- Make connections between beliefs and behaviours across different religions.
- Discuss the challenges of being a Hindu, Christian and Muslim in Britain today.



Home Learning

You can support me by:

- Helping me recall with speed times table and related division facts
- Reading a variety of texts with me across a range of genres.
- Supporting me to complete my weekly homework and practise my spellings.