



KS1 SATs Information Session

What are SATs?

- Standard Attainment Tests
- Take place at the end of Key Stage One (KS1) and Key Stage Two (KS2)
- All children across England take these tests in May



Standards
& Testing
Agency

KS1 SATs

- Your child's teacher is responsible for judging the standards your child is working at in English Reading, English Writing, Mathematics and Science by the end of Key Stage One.
- To help inform these judgements, pupils sit National curriculum tests in English and Mathematics.
- Children are reported as Pre Key Stage (PKS) Working Towards (WTS), Expected (EXS) or Greater Depth (GDS) within each of these areas.
- Teachers use the Teacher Assessment Framework found [here](#) to support their judgement.

English Reading

- Paper 1 - Short Text and Questions
- Paper 2 - Long Text with separate questions

Lucky Duck

When Lenny was a very little boy,
his dad bought him a really special
toy duck.

Duck was Lenny's best toy and
whatever Lenny did, Duck did too.



Practice questions

a Who gave the toy to Lenny?

Tick **one**.

a boy his dad

his gran his mum

b What toy did Lenny get?

English Reading

- Paper 1 - Short Text and Questions
- Paper 2 - Long Text with separate questions

Festivals

What are festivals?
Festivals are special days or times of the year when people celebrate. People might have time off work or school. At festivals, people dance and sing. Sometimes, they wear beautiful costumes and take part in parades. Often, you will see fireworks at festivals.

People all over the world celebrate many different festivals. Below, you can read about some of them.

Harvest festivals
Harvest festivals are held in many countries. They celebrate the food that has been grown and harvested to last throughout the winter.

In this country, harvest festivals take place at the end of September. Many schools make displays of food and flowers. They also give food to charity.

Sometimes, bakers will make special harvest loaves. These loaves are shaped like wheat to celebrate the harvest. Wheat is important because it is used in many types of food, including bread.

parade

harvest loaf

food box for charity

4

(page 5)

- 7 What do people in Italy do at the end of their festival?

(pages 4–5)


- 8 Put ticks in the table to show which statements are **true** and which are **false**.

	True	False
Hogmanay is a Scottish festival.		
In Jersey, people make carpets of flowers in the streets.		
In England, Harvest Festival takes place in April.		
Before the Chinese New Year parade, people celebrate with firecrackers.		

Mathematics

- Paper 1 - Arithmetic
- Paper 2 -
Mathematical
Reasoning

21 $54 - 15 =$



1 mark

13 $67 - 40 =$

1 mark

22 $60 \div 5 =$

1 mark

14 $8 +$ $+ 4 = 17$

1 mark

Mathematics

- Paper 1 - Arithmetic
- Paper 2 - Mathematical Reasoning

8 Kemi has 25 red beads and 6 green beads.

How many beads does Kemi have **altogether**?

beads

6 Match each label to the correct part of the date.

One is done for you.

date	Tuesday	28th	April	2020
label	day of the month	day of the week	year	month

A line connects the '28th' box in the 'date' row to the 'day of the month' box in the 'label' row.

Writing - Teacher Assessment Framework

Working at the expected standard

The pupil can, after discussion with the teacher:

- write simple, coherent narratives about personal experiences and those of others (real or fictional)
- write about real events, recording these simply and clearly
- demarcate most sentences in their writing with capital letters and full stops, and use question marks correctly when required
- use present and past tense mostly correctly and consistently
- use co-ordination (e.g. or / and / but) and some subordination (e.g. when / if / that / because) to join clauses
- segment spoken words into phonemes and represent these by graphemes, spelling many of these words correctly and making phonically-plausible attempts at others
- spell many common exception words*
- form capital letters and digits of the correct size, orientation and relationship to one another and to lower-case letters
- use spacing between words that reflects the size of the letters.

Science - Teacher Assessment Framework

Working at the expected standard

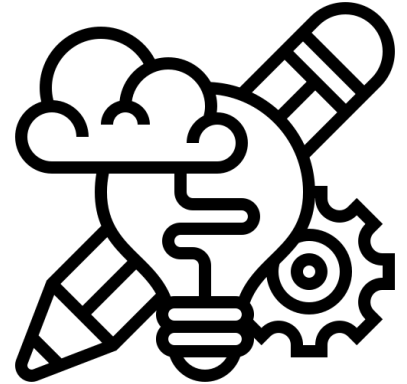
Science content

The pupil can:

- name and locate parts of the human body, including those related to the senses [year 1], and describe the importance of exercise, a balanced diet and hygiene for humans [year 2]
- describe the basic needs of animals for survival and the main changes as young animals, including humans, grow into adults [year 2]
- describe the basic needs of plants for survival and the impact of changing these and the main changes as seeds and bulbs grow into mature plants [year 2]
- identify whether things are alive, dead or have never lived [year 2]
- describe and compare the observable features of animals from a range of groups [year 1]
- group animals according to what they eat [year 1], describe how animals get their food from other animals and/or from plants, and use simple food chains to describe these relationships [year 2]
- describe seasonal changes [year 1]
- name different plants and animals and describe how they are suited to different habitats [year 2]
- distinguish objects from materials, describe their properties, identify and group everyday materials [year 1] and compare their suitability for different uses [year 2].

What's next?

- Class teacher's will be supporting children in developing their confidence in answering a range of question types
- Homework will focus on activities to support children



Any questions

